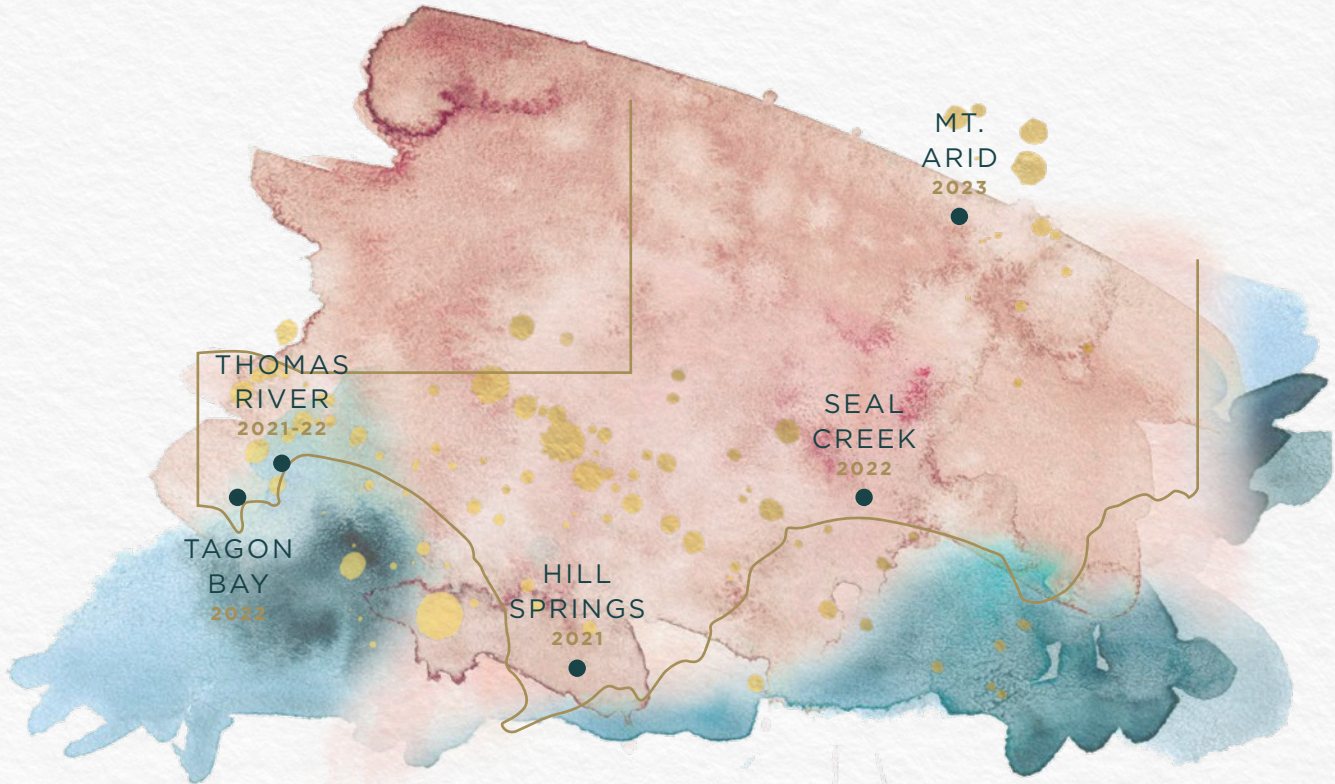


CAPE ARID  
ROOMS

MT. ARID EDITION

## CAPE ARID REGION



841 kilometres from Perth Point Zero

“And there amongst it all were two beautiful, big Christmas Trees  
(Nuytsia Floribunda), rising majestically out of the open country.  
Their varied and unconventional shapes form a rhythmic, staccato beat across  
the country which has its own weird beauty. How different a day can be...”

**CAPE ARID - PHILIPPA & ALEX NIKULINSKY**

## MT. ARID EDITION

Towering behind the bay, Mt Arid awaits to witness a decidedly ambitious climb, delivering staggering views spanning west to south and overlooking the Recherché Archipelago. The climb is worth it, as you contemplate the couture-esque Cape Barren geese grazing on the sandy beaches below, strutting with a pale-grey elegance, trimmed with black polka dots to complete the outfit; one of the world's rarest geese sipping on salt water like Champagne. A transformation occurs on this climb as saltbush and bluebush brush against your shins, bursting from granite with an imposing introduction; a deliberate manner that exults the contrast drawn from thousands of seasons blown from above and below.

### AFTERNOON TEA | 78PP

Cape Arid Rooms afternoon tea, served with your choice of Teassential tea or Mano a Mano filter coffee.

- W.A rock lobster, apple, cucumber, toasted brioche
- Salmon gravalax, crème cheese, cornichon, dill sandwich
- Bookara goats curd, roast capsicum relish, basil, parmesan choux
- Raspberry frangipane, rhubarb, vanilla mousseline, strawberry cremeux
- Coconut sable, coconut mousse, pistachio sponge, mango passion fruit confit
- Praline dentelle, cocoa sponge, hazelnut milk chocolate mousse

### SPECIALTY REFRESHMENTS

Narrow Trail <i>non-alcobolic</i>	14
Ovant verde, wattle seed, ginger beer, wax leaf	
Cape Arid Gin & Tonic	15
Cape Arid Horizon Gin, London essence tonic, lemon myrtle, peach	
Cumulus Horizon	18
Cape Arid Horizon Gin, apricot, fino, lemon myrtle	
Hooded Barren	17
Cape Arid Horizon Gin, Davidson Plum, grapefruit, salted honey	
Bay of Isles	17
Cape Arid Horizon Gin, sunrise lime, sparkling, salted grapefruit, river mint	

### PAIRED SPARKLING AND CHAMPAGNE *gls*

Sittella Sparkling Chenin Blanc NV <i>Swan Valley</i>	13
Idée Fixe Brut Rosé 2020 <i>Margaret River</i>	19
Taittinger 'Cuvée Prestige' Brut NV <i>Reims</i>	27



Baben & Co.  
Chocolate

Bookara  
Goats Curd

Raeburn Orchards  
Mango

Amuri Creek Fruit Farm  
Strawberry

Kailis Brothers  
Salmon Gravalax

W.A.  
Rock Lobster

Margaret River - 270km

Ravenhill - 364.6km

Robystone - 322km

Mt Barker - 367.6km

Leederville - 4.1km

Rottmest Island - 33.1km

Perth Point Zero 841km

Cape Arid

## THE ART OF TEA

We individually brew each tea at the perfect temperature and brewing time.

### Summer Iced Teas

True to the season and brewed to the Cape Arid Rooms standard, a deliciously chilled and revitalising offering.

#### Zestea

*Rooibos, mandarin peel, orange, lime, lemon myrtle, lemongrass, tangerine essential oil.*

Naturally caffeine-free red rooibos with a hint of fruity citrus.

#### Purple Rain

*Blueberries, Australian Sencha green tea, apple, mango, butterfly pea flower, passionfruit flavour.*

A blend rich in antioxidants with a subtle sweet taste.

#### Gin & Tea

*Juniper berries, green tea, lemon myrtle, lime peel, elderflower, coriander seed, jasmine flower.*

Inspired by the highball cocktail, this green tea alternative holds all the botanical goodness of gin.

### Sweet and Mellow

*Kiss From a Rose | A blend of white tea, orange, rose, jasmine 85°/4 mins*

*Arakai Black Tea | Australian grown premium black tea 85°/2 mins*

*Apple Spice | Apple, toasted cinnamon, orange, ginger 100°/4 mins*

### Vibrant and Refreshing

*Cape Arid Breakfast | Breakfast black tea blended with native strawberry gum 100°/2 mins*

*Rejuvenate | Green tea, organic lemon myrtle, lavender, eucalyptus 85°/4 mins*

*Minted Raspberry | Organic peppermint, spearmint, freeze dried raspberry, vanilla 100°/4 mins*

*Organic Lemongrass and Ginger | Subtle warmth of ginger and fresh aroma of lemongrass 100°/4 mins*

*Immune Booster | Ginseng, spearmint, rosehip, ginger 100°/4 mins*

### **Rich and Bold**

Assam | *Black tea from the Assam region in India 100°/2 mins*

Lapsang Souchong | *Smoky Chinese black tea 100°/2 mins*

Houjicha | *Highly aromatic sencha from Acheron Valley, lightly roasted 80°/2 mins*

### **Light and Aromatic**

Gin Shan Creme Oolong | *Light oolong tea with a creamy stone fruit aroma 85°/4 mins*

French Earl Grey | *Floral black tea with bergamot oil 85°/2 mins*

Jasmine Pearl | *Hand-rolled green tea gently scented with jasmine blossoms 75°/4 mins*

Darjeeling | *Champagne of the tea world, distinct muscatel aroma 100°/2 mins*

### **Rare and Precious**

Gulbarn | *Traditionally used as bush medicine due to its high antioxidant and medicinal properties. The brew creates a soothing aroma and a fresh aftertaste 100°/4 mins*

16

Huoshan Yellow Tea | *Used as a tribute tea in the past, this tea is rare and only produced in Anhui province. Pale golden liquor accompanied by light and smooth flavour, vegetal yet fruity 75°/4 mins*

12

Aged Jasmine Silver Needle | *Aged for over seven years, the handpicked buds of the tea plant are scented with fresh jasmine flowers. Beautifully fragrant and delicate 75°/4 mins*

14

## **FILTER COFFEE**

The inherent nature of filter brewed coffee paired with the flavour profile of our featured roasters, allows for a lower acidity, greater sweetness, and a cleaner finish. This offers the perfect coffee accompaniment to the Cape Arid Rooms afternoon tea menu. By using a higher percentage of water and a longer extraction time, filter coffee – when compared to espresso, enhances the unique characteristics associated with the individual processing, terroir and roast profile. All of these factors lead to a better expression of a coffee, delivering the finest flavour experience to the end consumer.

In this edition, we are delighted to introduce you to the flavours of Finca El Silencio. Owned by Rivier Quintero and located in the highlands of the municipality Inzá, Cauca, this farm spans between two mountains of the Colombian Andes. Rivier named the farm El Silencio in dedication to the peace and tranquillity that his lofty home exudes, and with three generations of coffee producers in the family line, his wife Flor and their son's continue the tradition by working the business together.

As a driver for a community role-model, his ethos surrounds the growth of a common objective – to unify the people as they strive to produce an exceptional coffee for the world to enjoy. Welcome Rivier – the pleasure is all ours.

### **Espresso Coffee by Mano a Mano Coffee Roasters**

Short black	4
Short macchiato	4
Cappuccino	5
Latte	5
Flat white	5
Long macchiato	5
Milk alternatives, add	2





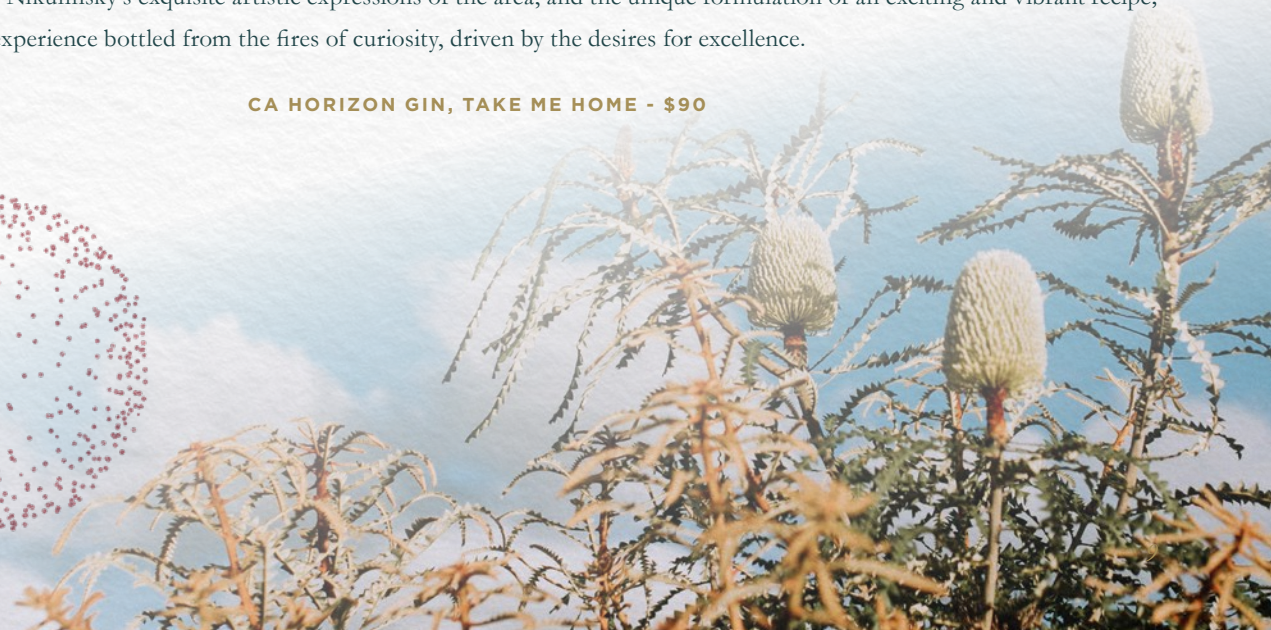
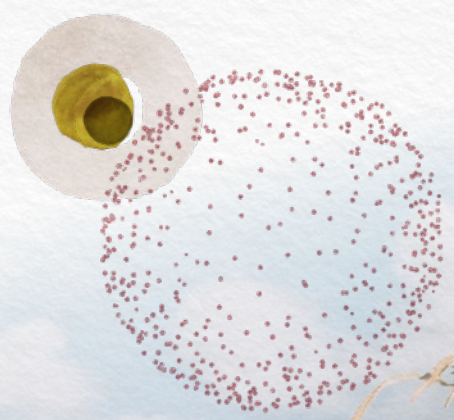
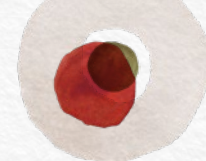
## HORIZON GIN

It began with father and son; an avid gardener, a wild windsurfer, a deep passion for local greenery, and the creation of Australia's smallest gin distillery. Bottling the spirit of a remote coastal region became an impassioned endeavour that led to the beginnings of the Esperance Distillery Co, and there a deeply personal partnership with the team at the Cape Arid Rooms began.

Following an expedition to Cape Arid; guided with consultation by Esperance Tjaltjraak Native Title Aboriginal Corporation, and botanists, a variety of botanicals endemic to Esperance were identified for the delicate aromatic properties required. Then carefully collected for creation, further workings with nurseries have been established to encourage propagation and conservation of species, for the future preservation of continued regeneration.

Inspired by Philippa Nikulinsky's exquisite artistic expressions of the area, and the unique formulation of an exciting and vibrant recipe; this is a take-home experience bottled from the fires of curiosity, driven by the desires for excellence.

**CA HORIZON GIN, TAKE ME HOME - \$90**



## CHAMPAGNE

### Non-Vintage Champagne

Taittinger 'Cuvée Prestige' Brut <i>Reims</i>	165
Lacourte-Godbillon Terroirs d'Écueil Premier Cru NV <i>Écueil</i>	165
Pol Roger 'Brut Réserve' NV <i>Épernay</i>	195
Louis Roederer 'Collection 242' <i>Reims</i>	185
Champagne Devaux 'Cuvée D' NV <i>Côte des Bar</i>	185
Charles Heidsieck 'Brut Réserve' <i>Reims</i>	195
Bollinger 'Special Cuvée' Brut <i>Aj</i>	235
Krug 'Grande Cuvée' NV <i>Reims</i>	695

### Blanc de Blancs

Veuve Fourny & Fils Blanc de Blancs Brut NV <i>Vertus</i>	135
Pierre Gimonnet et Fils 'Cuvée Cuis' Brut	
Blanc de Blancs NV <i>Cramant</i>	160
Larmandier-Bernier 'Latitude' Blanc de Blancs NV <i>Vertus</i>	210
Diebolt-Vallois 'Prestige' Blanc de Blancs NV <i>Côte des Blancs</i>	235
Agrapart 'Terroirs' Blanc de Blancs NV <i>Avize</i>	295

### Blanc de Noirs

Alexandre Bonnet Blanc de Noirs Brut NV <i>Les Riceys</i>	135
Lallier Blanc de Noirs NV <i>Aj</i>	265

### Rosé

Gosset Grande Rosé NV <i>Aj</i>	265
Billecart-Salmon Brut Rosé NV <i>Mareuil-sur-Aj</i>	285
Ruinart Rosé NV <i>Reims</i>	325

### Vintage & Grande Cuvée

Laurent Perrier Millésimé Brut 2012 <i>Tours-sur-Marne</i>	265
Franck Bonville Brut Millesime Blanc de Blancs 2015 <i>Avize</i>	275
Taittinger 'Comtes de Champagne' Blanc de Blancs 2008 <i>Reims</i>	595
Pol Roger Cuvée 'Sir Winston Churchill' 2009 <i>Épernay</i>	680

## AUSTRALIAN SPARKLING

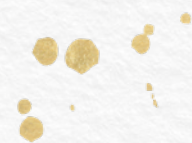
Howard Park 'Jeté Brut Blanc' NV <i>Great Southern</i>	80
Idée Fixe Blanc de Blancs 2020 <i>Margaret River</i>	110
Leeuwin Estate Brut Pinot Noir Chardonnay 2020 <i>Margaret River</i>	89
Singlefile Great Southern Sparkling NV <i>Great Southern</i>	75
Deviation Road 'Altair' Brut Rosé NV <i>Adelaide Hills</i>	85
Oakridge Blanc de Blancs 2016 <i>Yarra Valley</i>	95
Arras Brut Elite NV <i>South East TAS</i>	125
Rockford 'Black' Sparkling Shiraz NV <i>Barossa Valley</i>	185
Ashton Hills Pinot Noir Rosé 2018 <i>Adelaide Hills</i>	95

## WORLD SPARKLING

Louis Bouillot Perle d'Aurore Rose de Presse NV <i>Burgundy</i>	80
Lucien Albrecht Cremant d'Alsace NV <i>Alsace</i>	75
Lantieri Franciacorta 'Cuvée Brut' DOCG NV <i>Lombardy</i>	105
Mas Pere Cava 'Ecologic' Brut NV <i>Penedès</i>	58
Quartz Reef 'Methode Traditionelle' Brut NV <i>Central Otago</i>	85
Massolino Moscato d'Asti 2020 <i>Piedmont</i>	99

## STILL WINE

Pewsey Vale 'Prima' Riesling 2019 <i>Eden Valley</i>	70
Marc Brédif Vouvray 'Classic' 2020 <i>Loire Valley</i>	88
Domaine Naturaliste 'Floris' Chardonnay 2020 <i>Margaret River</i>	89
Cape Mentelle Rosé 2022 <i>Margaret River</i>	69
The Other Wine Co. Shiraz Pinot Noir 2020 <i>Adelaide Hills/TAS</i>	70



## CAPE ARID TEA BLENDS AT HOME

In dedication to the enhancement of the ultimate tea drinking experience, the Cape Arid Rooms and Teassential have partnered to bring the essence of the finest regional flavours to your home. Guided by the beauty and abundance of Mother Nature's southern-most Western Australian parklands, we invite you to explore these precious blends, created just for you.



### **Cape Arid Breakfast Tea**

*Organic Black Tea, wild Australian native strawberry gum 95°/3 mins*

The unique black tea infusion pays homage to our native Australian bush ingredient, designed to invigorate and enjoy daily.



### **Hill Springs Edition**

*White peony, strawberry gum, gulbarn, eucalypt, lemon myrtle 85°/4 mins*

Hill Springs shades of green vegetation inspire this blend of four distinctly unique, yet complementary combinations of the Myrtaceae (myrtle) family.



### **Thomas River Edition**

*Sencha, river mint, finger lime, globe amaranth 75°/4 mins*

The invigoration of a Thomas River sea breeze inspires this blend of Australian grown Sencha, native mint and zesty finger lime. A cooling, seasonally driven sip.



### **Tagon Bay Edition**

*Quandong, strawberry gum, hibiscus 100°/4 mins*

The colours of Tagon Bay, a beautifully blushed brew produced by the bold and tart combinations of quandong and hibiscus, balanced by the freshness of strawberry gum.



### **Seal Creek Edition**

*Black tea, wattle seeds, pepper berry, apple, Davidson Plum, cocoa husk, marigold, blue cornflower 85°/4 mins*

Inspired by the layered texture of golden banksia growing from the blackened ground. Australian black tea and wattle seed layered with apple and cocoa husk form a warm, toasty sweetness. The perfect drink on a cold evening.



## CAPE ARID COLLECTION



Nuytsia Floribunda



Banksia Bush Rat and Parrots



Banksia Coneflower and Fungi



Inland Rock Gardens



Jorndee Burn



Winter Hakea and Burnt Sheoak

## CAPE ARID COLLECTION



Eucalyptus and Spinebill



Autumn On The Rocks



October Abundance



Astoloma Frogs and Darwinia



Eucalyptus Sweedmaniana



Banskias And Pollinators

PRINTS AVAILABLE FOR PURCHASE FROM \$445 UNFRAMED AND \$795 FRAMED

VISIT [SHOP.STATEBUILDINGS.COM](http://SHOP.STATEBUILDINGS.COM)



Contact: (08) 6168 7780 | Email: [capearidrooms.thetreasury@comohotels.com](mailto:capearidrooms.thetreasury@comohotels.com)

1 Cathedral Avenue, Perth WA 6000